

Improving School & Community Safety: An Multi-Integrated Systems Approach

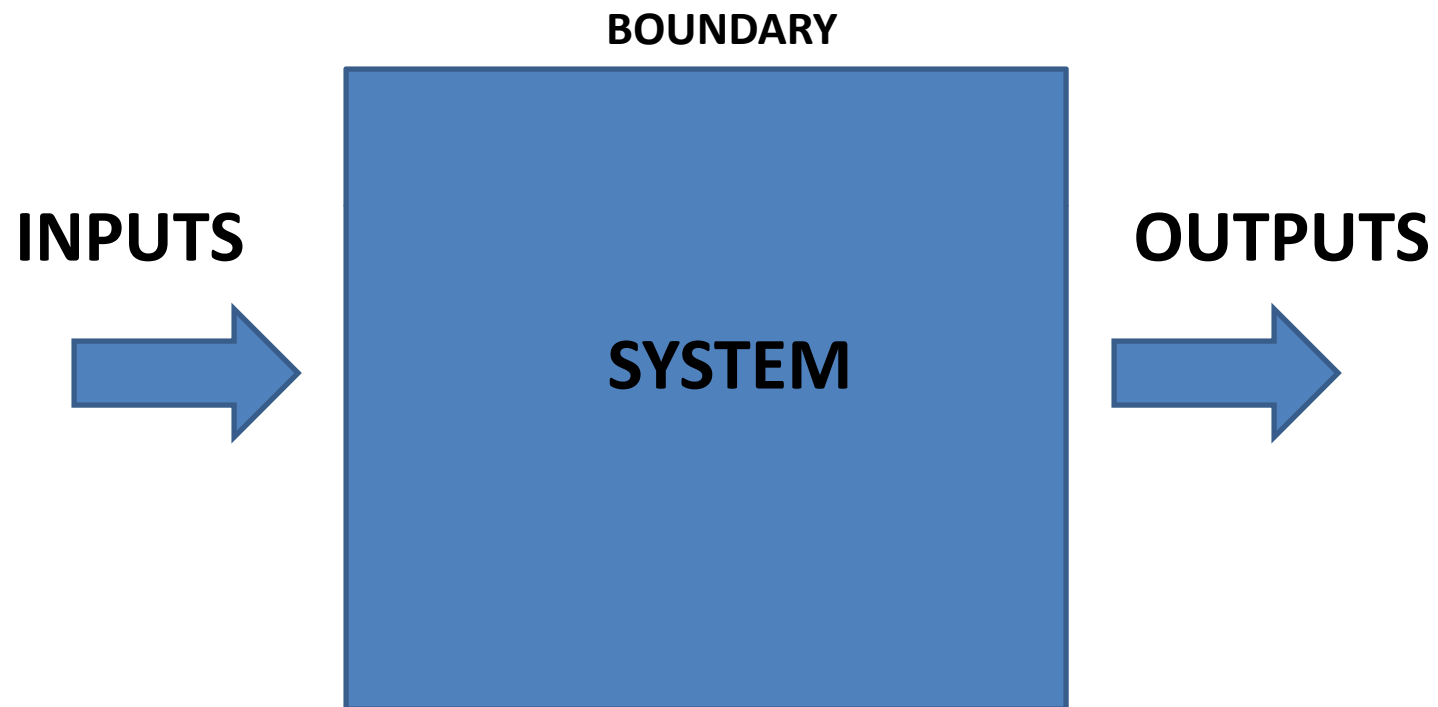
Prepared for the Indiana General Assembly
Judge Steven C. Teske
Juvenile Court of Clayton County, Georgia
An Annie E. Casey JDAI Site

SYSTEM DEFINED

a set of interacting components,
acting interdependently and
sharing a common boundary
separating the set of components
from its environment.

Bozeman, B. *Public Management and policy Analysis*, St. Martin Press, Inc. New York (1979), 309.

SYSTEMS THEORY



LINEAR PROGRAMMING MODEL

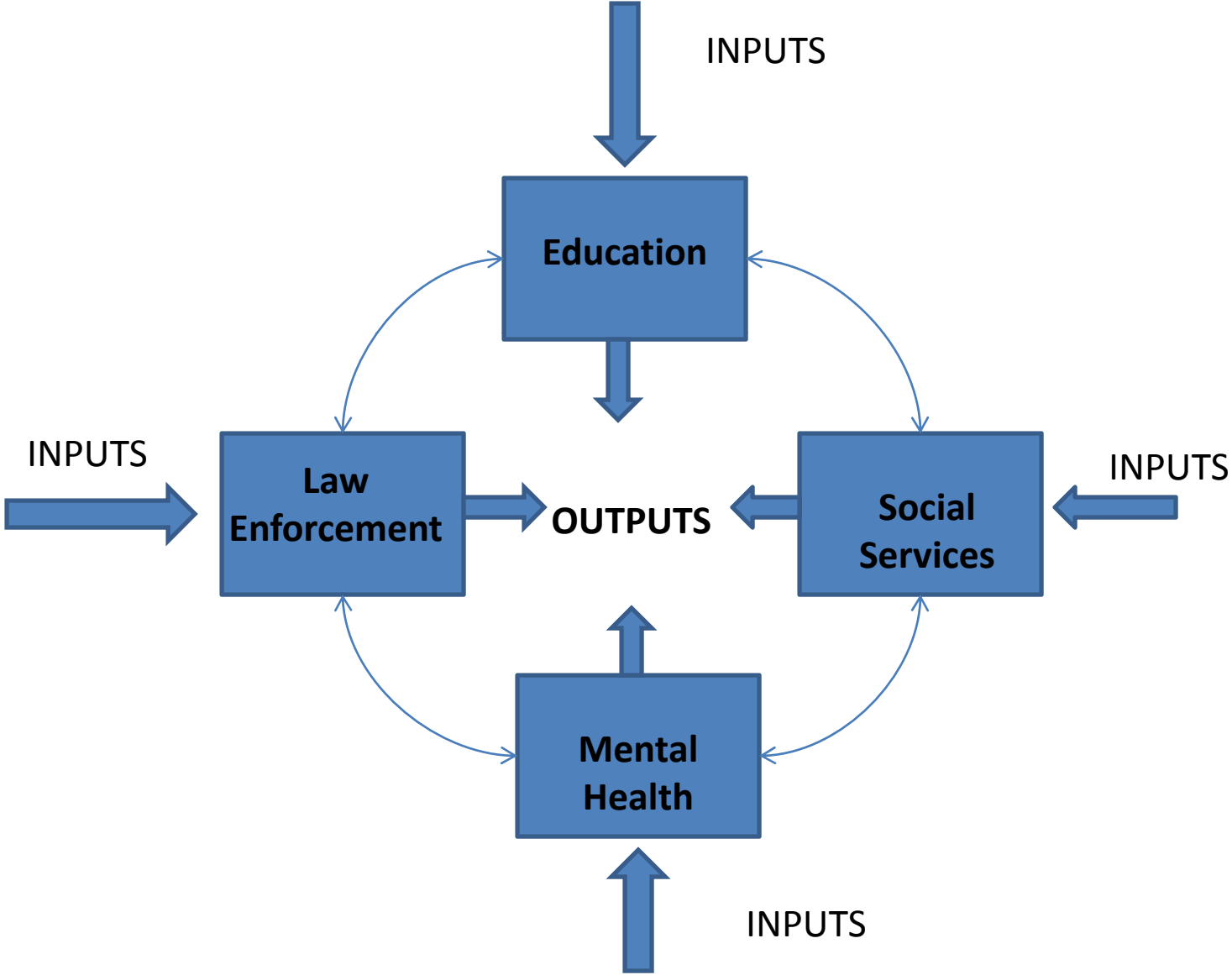
those values of X , the variables that maximize the linear objective Z while simultaneously satisfying the imposed linear constraints and the non-negativity constraints.

Bozeman, B. *Public Management and policy Analysis*, St. Martin Press, Inc. New York (1979), 309.

WHAT IS THE A JUVENILE JUSTICE SYSTEM?

- WHAT IF THE DESIRED OUTCOME IS DEPENDENT ON MULTIPLE SYSTEMS?
- HOW ARE THOSE MULTIPLE SYSTEMS INTEGRATED TO MAXIMIZE THE DESIRED OUTCOME?

MULTI-INTEGRATED SYSTEM THEORY



SCHOOL OFFENSE PROTOCOL AGREEMENT

- Focused Acts: Affray, DPS, DC, Obstruction
- First Offense/Warning
- Second Offense/Referral to Workshop
- Third Offense/Complaint Filed



School Offense Agreement Signed by all Police Chiefs, School Superintendent, Juvenile Judges, DFCS Director, and other partners on July 8, 2004

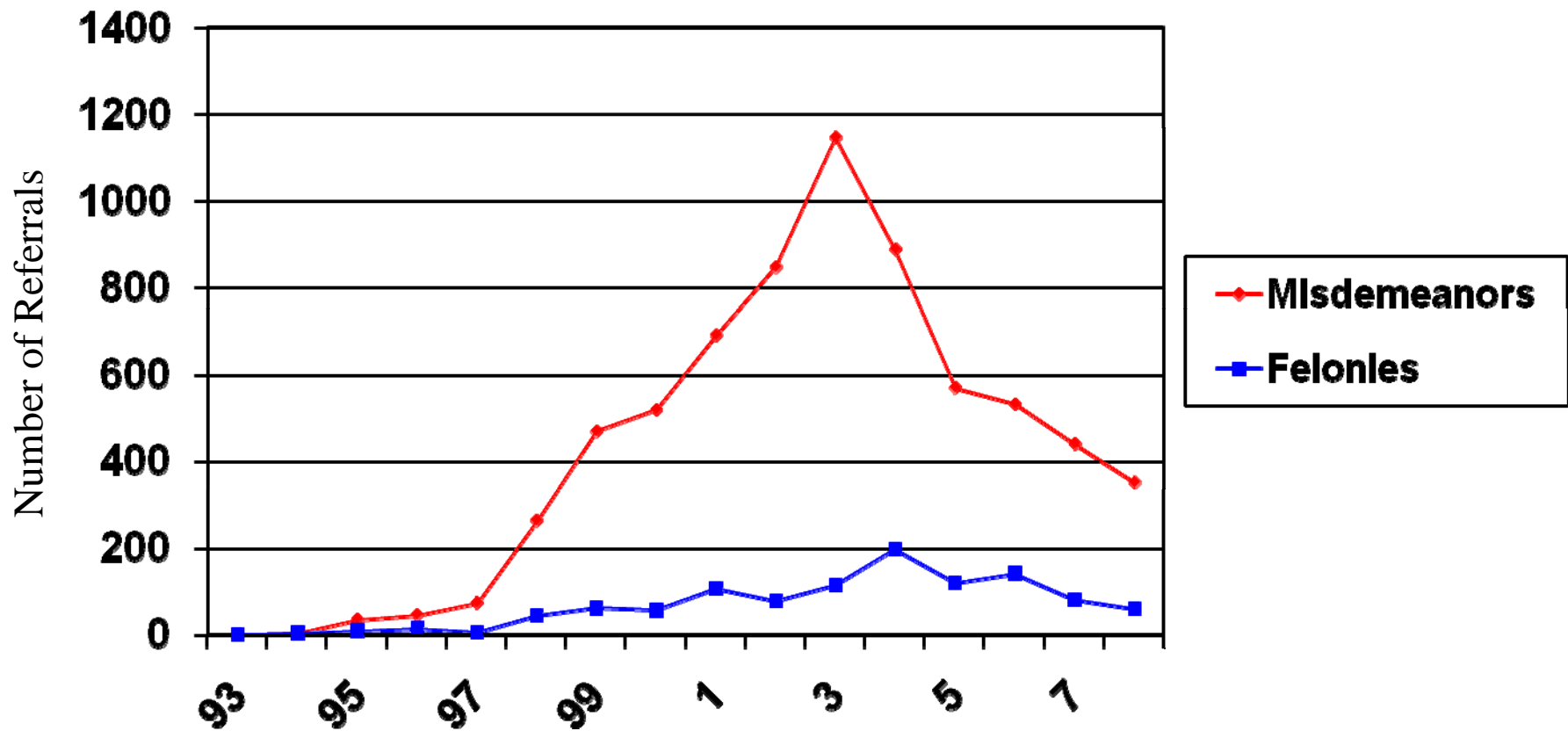


Figure 3. Line graph showing the increase in referrals after police placed on campus and the decrease after the protocol became effective in 2004.

OBJECTIVES OF PROTOCOL

- Reduce misdemeanor school referrals to the juvenile court & keep kids in school;
- Reduce probation caseloads that will increase supervision of high risk youth (the kids we are scared of);
- Give police more time to build rapport with students to gather intelligence on crimes about to occur;
- Increase safety in the school and the community;
- Increase graduation rates.

SCHOOL CONNECTEDNESS

- School connectedness is a strong protective factor against delinquency. US Surgeon General. (2001). *Youth Violence: A Report of the Surgeon General*.
- School connectedness is linked to lower levels of substance abuse, violence, suicide attempts, pregnancy, & emotional distress. *Journal of School Health 72 (4)*.
- OSS of elementary & middle school students contributes to drop-out rates. Predictors of Suspension & Negative School Outcomes: A Longitudinal Investigation (2003)

EFFECTS OF ZERO TOLERANCE

- Suspension rates have doubled
- School Code violations result in court referrals
- Increase in police on school campus
- Increase in suspensions and referrals has significantly increased racial & ethnic disparities
- Drop-out rates increase
- Juvenile crime increases

**“Schools are a microcosm of the
community”**

Sgt. Marc Richards

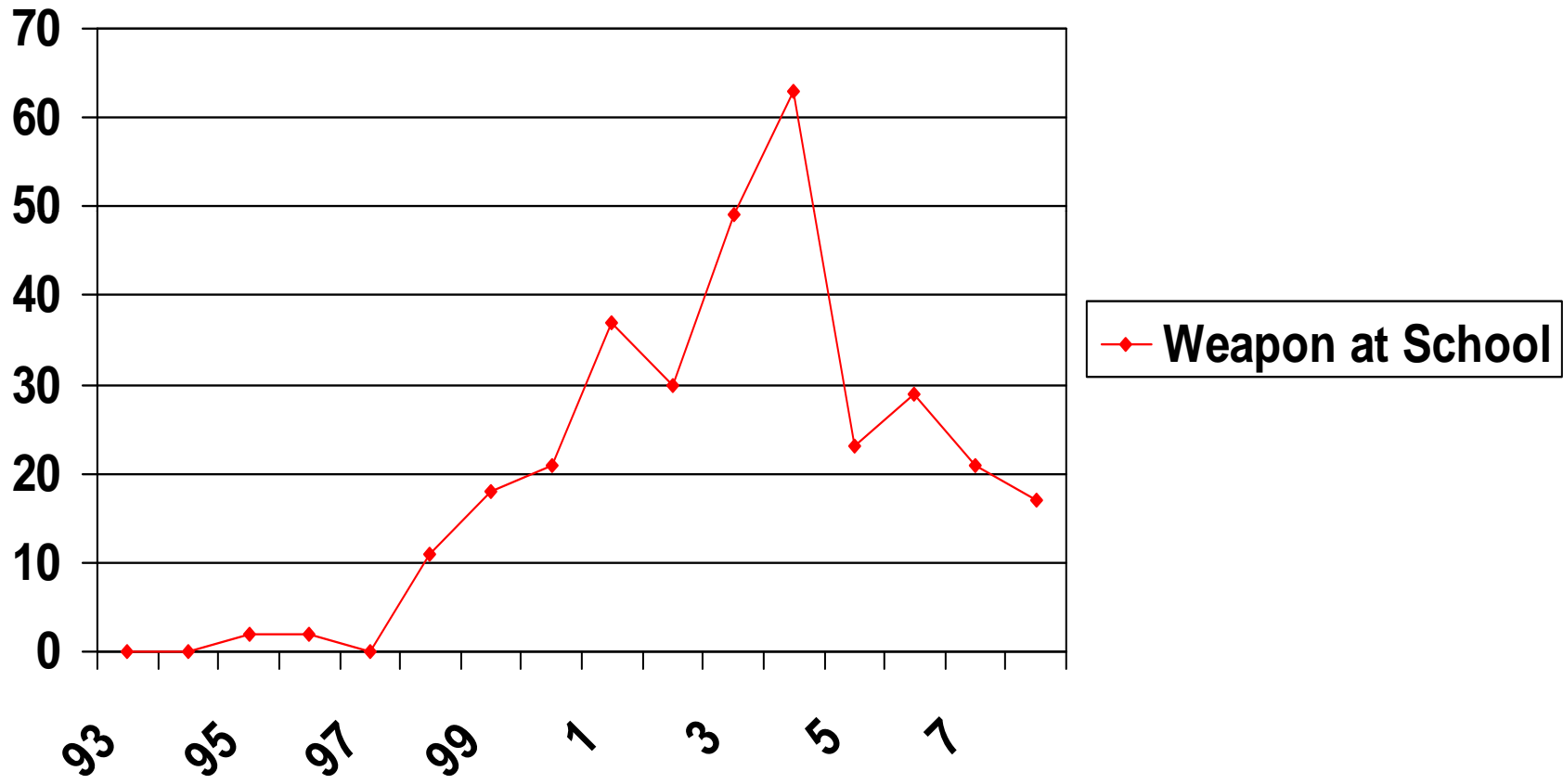
Supervisor, SRO Unit

Clayton County Police Department

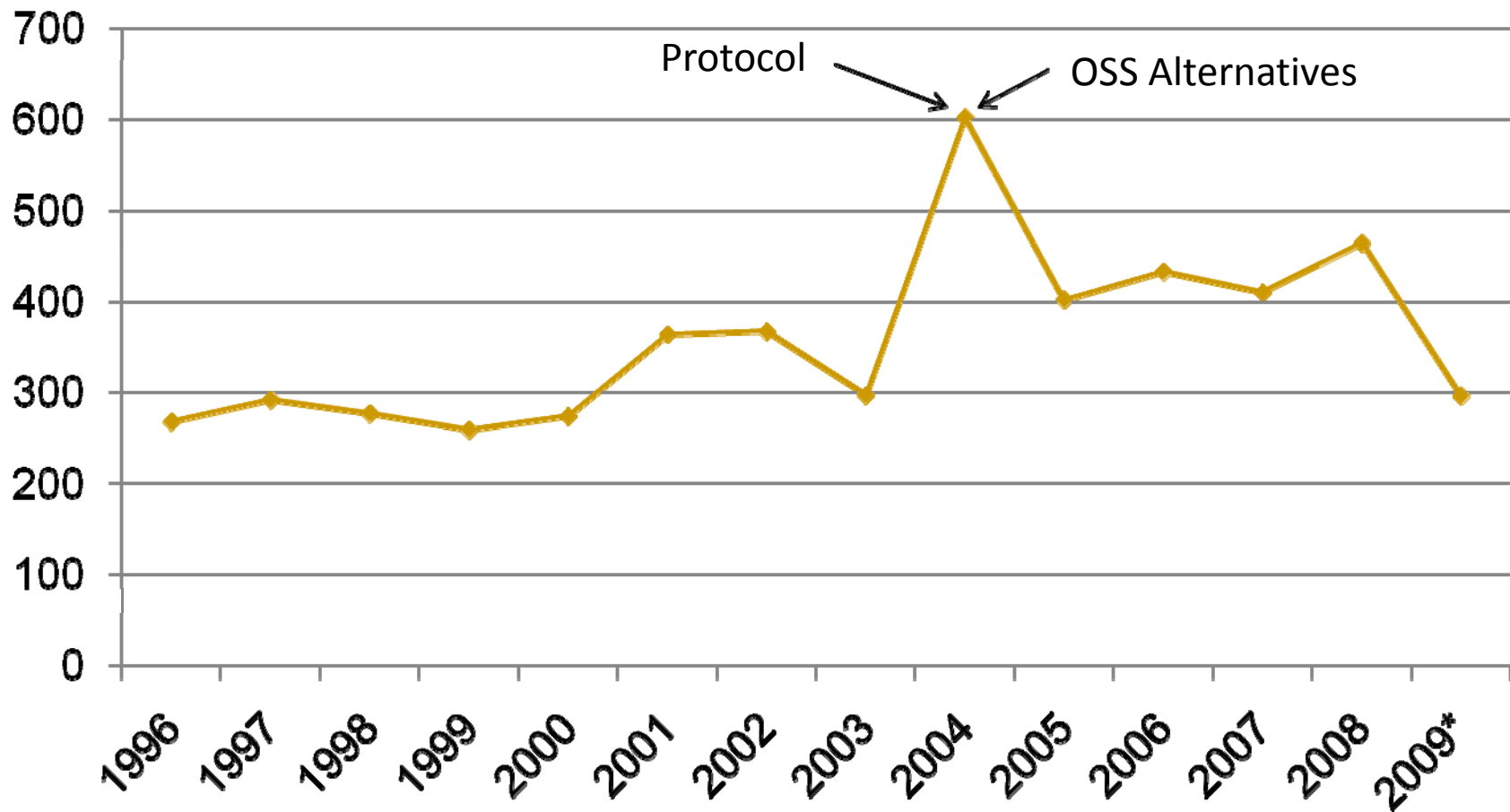
EFFECTIVE USE OF PROTOCOL PROMOTES SAFETY



PROTOCOL INCREASES POLICE INTELLIGENCE



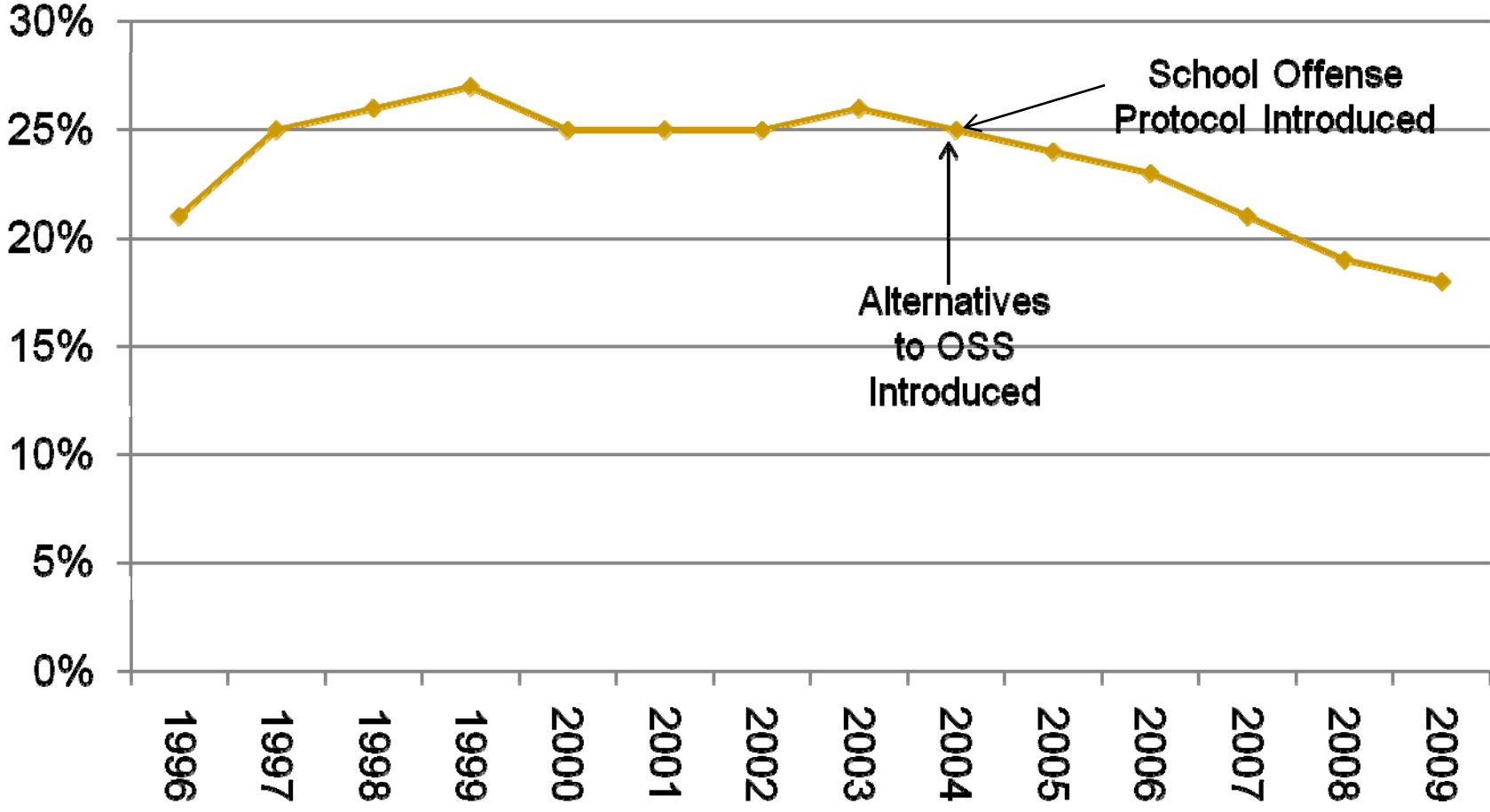
FELONY RATES



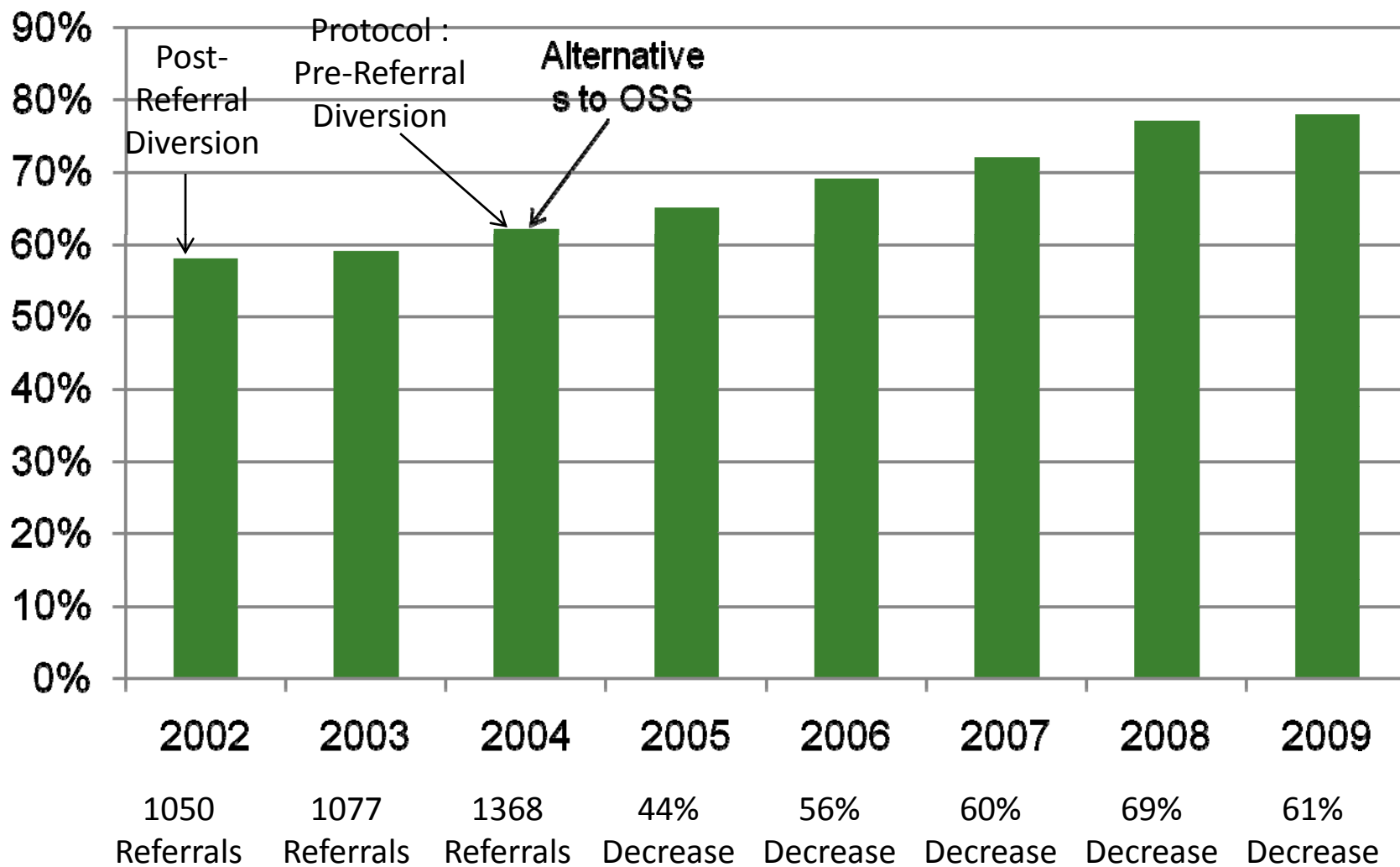
AVOIDING A TRAGEDY & MEDIA DILEMNA

How will the media & community respond if a person comes on school campus with a gun while your SRO is at intake booking a student for a school fight or disorderly conduct?

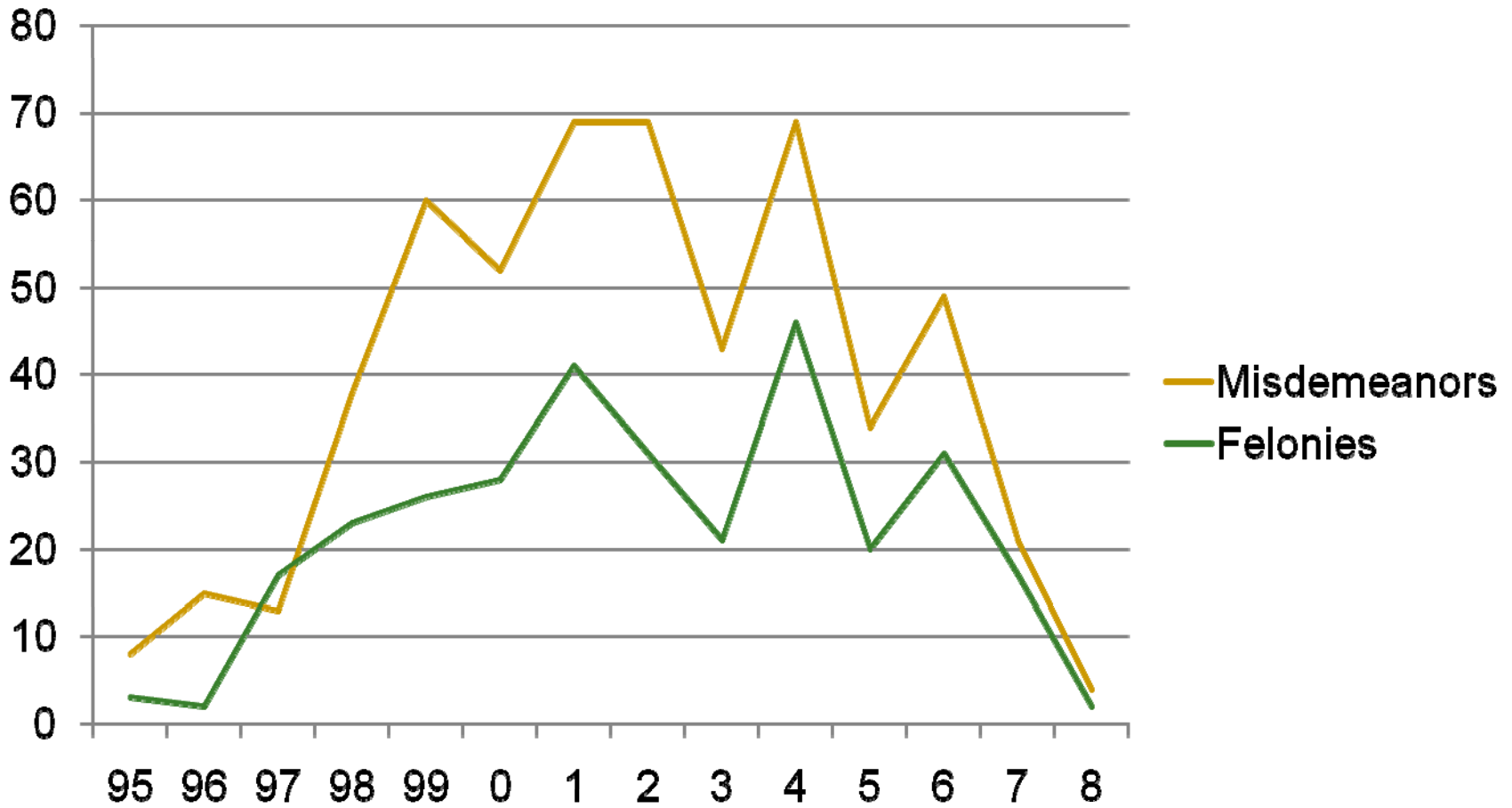
OUT-OF-SCHOOL SUSPENSION MIDDLE SCHOOL



GRADUATION RATES



DETENTION RATES ON SCHOOL REFERRALS



QUESTIONS

Steve.teske@co.clayton.ga.us